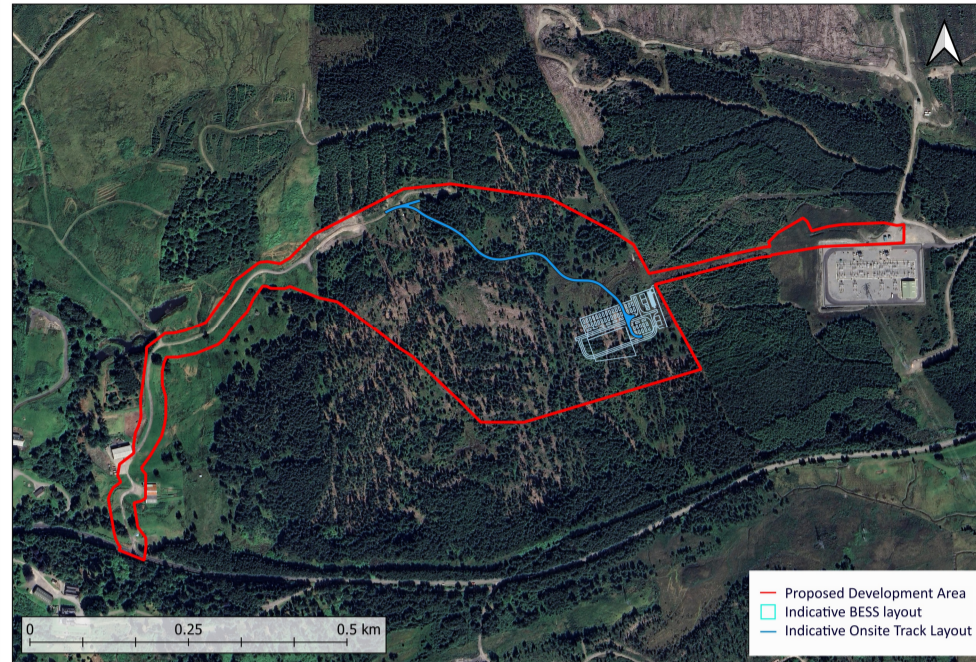


THE PROPOSED DEVELOPMENT



Proposed Site Layout

Boralex is currently investigating the potential for a standalone Battery Energy Storage System (BESS) of approximately 36 Megawatts (MW) on land north of the A832 at Lochluichart Estate, located in the Highlands.

Key Features of the Development

- **Site Area:** The Proposed Development area comprises approximately 18 hectares of planted and natural forestry land, which slopes from north to south;
- **Underground cable connection:** The Proposed Development includes an underground cable connection to the nearby Corriemoillie substation, situated approximately 300 metres to the east of the BESS site; and
- **Substation location and connection point:** The Corriemoillie Substation, the project's intended point of connection, is situated within an adjacent area of forestry at a similar elevation.

Site Design

The Proposed Development area, shown with a red line, is larger than the final development footprint to allow flexibility in final design. The layout of the BESS facility, including the onsite access track will be shaped by ongoing assessment work.

Planning Timeline

Submission of the necessary planning application for the proposed Lochluichart East BESS project is expected to be summer 2025.

Infrastructure

It is anticipated that the BESS compound area will be approximately 1.5 ha.

The main part of the facility is likely to consist of 55 battery storage units housed in containers, installed in rows. Each container will be approximately 6.0 m long, 2.4 m wide and 2.9 m high and likely to be dark green in colour. There will be Power Conversion Systems (PCS) and transformers serving each set of two containers. Fire detection and suppression systems and water storage tanks will also be installed within the facility.

Construction and Site Access

The potential effects of construction traffic will be assessed throughout the design and Environmental Report process, in consultation with The Highland Council (THC) and Transport Scotland. Impacts will be minimised as much as possible. Further details around the planned route to site and expected traffic movements will be provided in the planning application.

There is an existing forestry track to the west of the site which will be utilised for access. A new track will be required from the top of this existing track to the BESS platform, which will be approximately 400 m in length.

Should Lochluichart East BESS be consented, construction would not be expected to commence until approximately winter 2026.